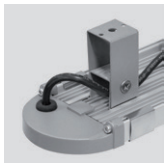


Weatherproof

ELW

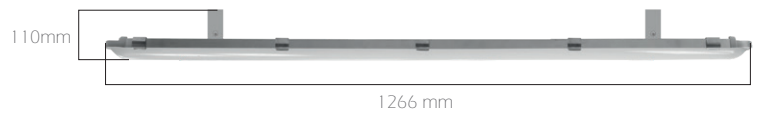
IP65

They can be used in many areas for parking, storage, technical rooms and other areas for industrial purposes. It is possible to reduce and increase the light level by controlling with the automation system. While saving energy in this way, the luminaire life does not decrease thanks to the LEDs used in the product.

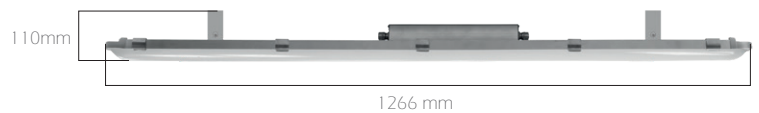


Suspension System

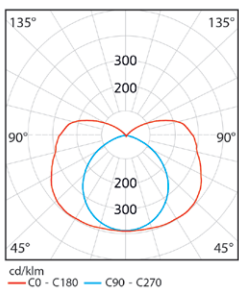
(Driver On Board)



IP65 Driver Type



90 mm



Code	ELW120-40	ELW120-60	ELW120-80
LED	High efficiency Mid-Power LED		
System Power	40 W	60 W	80 W
Light Flux	4.400lm	6.600lm	8.800lm
Colour Temperature	3000 - 4000 - 5000 - 6500 K		
Cooler	Cooling from the body surface		
Voltage	220 volt - 50hz		
Body	Aluminum extrusion		
Diffuser	Opal - Polycarbonate diffuser		
Colour	Matt anodized		
Accessory	Assembly springs		
Box Dimensions	17x132x12 cm		
Weight	3.100 gr		