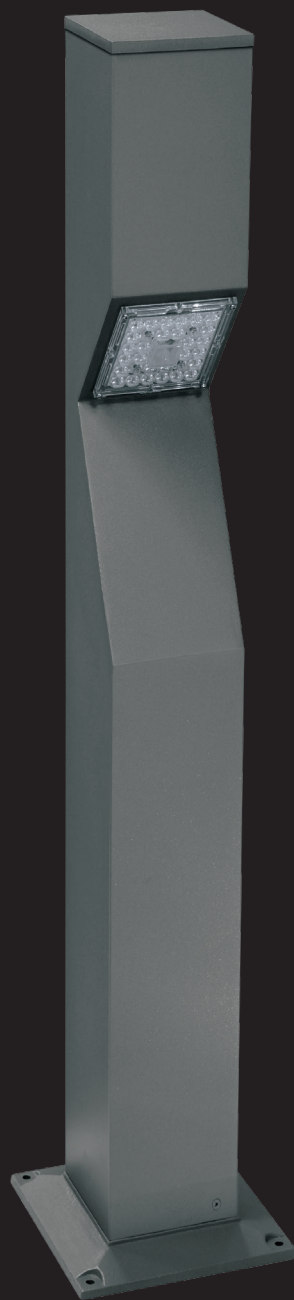
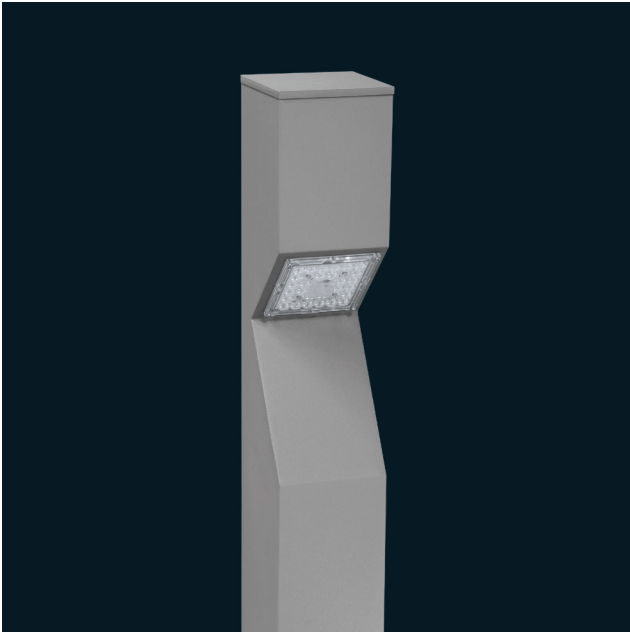


# Luxor

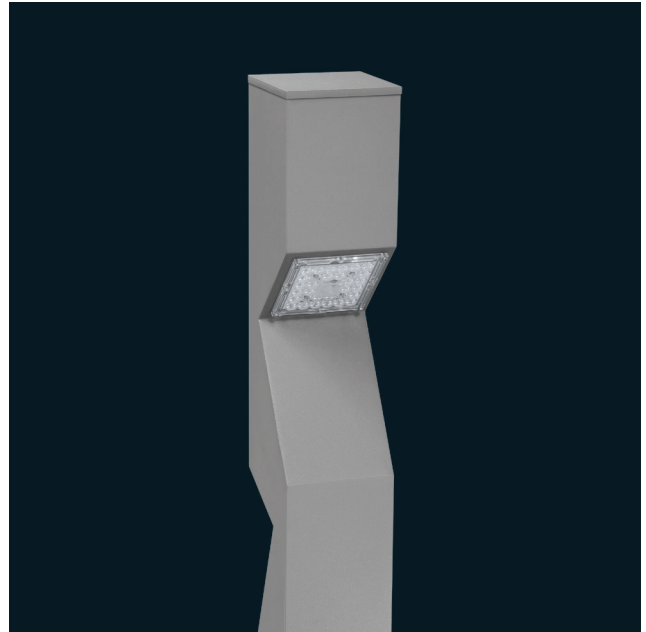


L I T P A

These are designed to be cornered and integrated with the body except for the usual. In the design of luminaires, emphasis was placed on modern and aesthetic elements as much as light efficiency. Thanks to the LED module structures, luminaire powers can be adjusted to desired levels. High efficiency LEDs and optical structures provide the desired light levels and distributions.



CB10

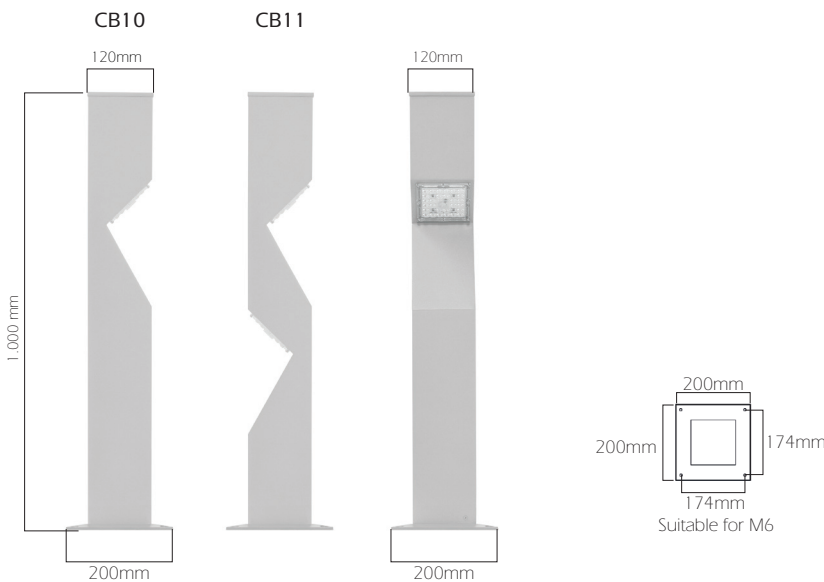


CB11

Body:Aluminum  
 Base: Aluminum injection  
 Top Cover:Aluminum injection  
 Diffuser: Polycarbonate  
 Led: Power Led  
 Voltage:220V - 50Hz

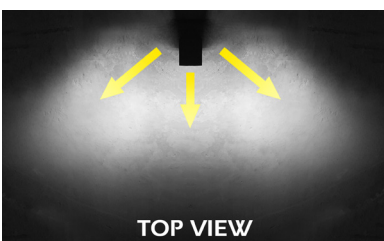


Code	Power	Lumen	Colour Temperature
CB10	12W	1.300lm	4.000 - 5.000K
CB11	2x12W	2x1.300lm	4.000 - 5.000K



CB10

CB11



TOP VIEW

