



# SAKURA



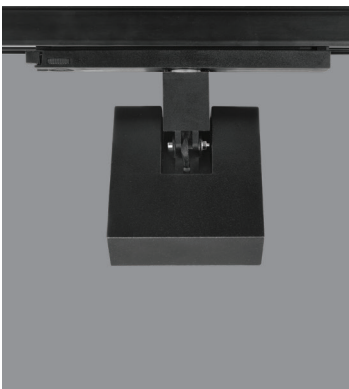


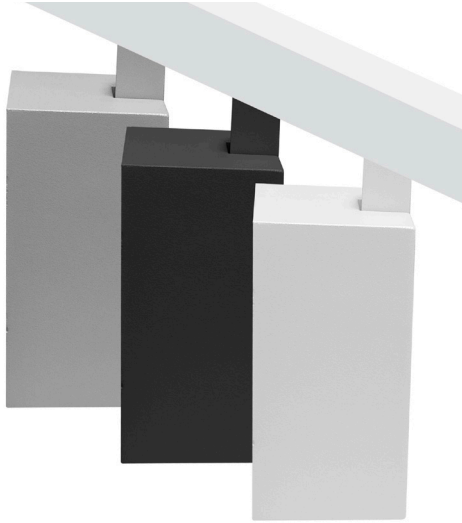
Sakura is installed on rail in areas where store, showcase and rail lighting systems are used. It can be used effectively in many areas with its design that can be easily rotated in any direction. Aluminum body structure provides perfect heat transfer and performs the cooling task required for leds in the best way. In this way, high efficiency leds have a very long life.

The back of the body is more noticeable due to the usage directions of the spots. Thanks to its minimalist structure, Sakura does not harm aesthetic values.

Thanks to the optical elements used in the luminaire, the luminaire light is distributed extremely smoothly on the surfaces. Any moire is not seen.

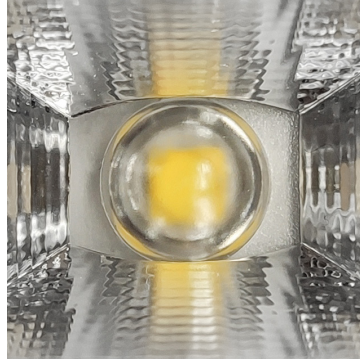
The optical part of the fixture consists of a lens and glare controller. The light passing through the lens is directed to the desired surface by special light controller with high glare control. It offers very low UGR values. UGR value is less than 6.





The luminaires are designed in 3 different colors as white, black and gray. This variety of colors provided by the fixtures allows color selection according to the decoration of the spaces. In this way, the adaptation of the fixtures to their usage areas and their aesthetic contribution can be increased. The luminaires can fully meet the lighting needs of the environments thanks to two different sizes and wattage options.

In addition to the high quality optical systems used in the luminaires, the LEDs used provide high savings thanks to their high efficiency. Thanks to the aluminum body, it provides good thermal conduction, allowing the LEDs to always operate at low temperatures.



The optical elements used in the fixtures provide different light distributions to meet the technical conditions of the places to be illuminated. The optical elements used contain highly efficient reflective surfaces. Glare is minimal.



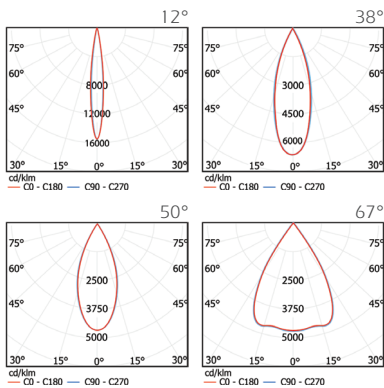
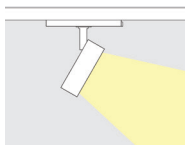


IP20

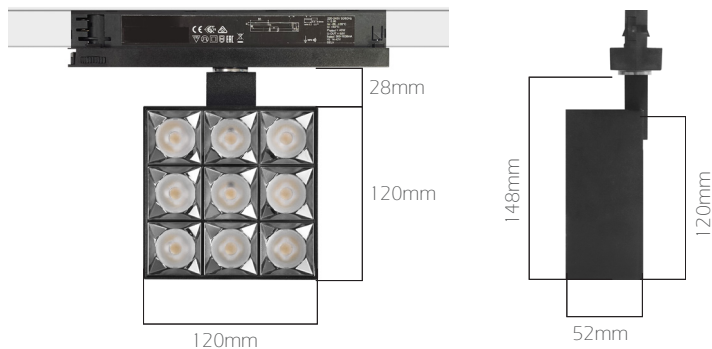
Sakura Oki spots, the big size of the Sakura family, attract attention with their stylish and elegant appearance, as well as compact and fine structures. The surface structure, which evokes the diamond in the reflector, makes the spots extremely attractive visually. It can be easily mounted to the rail.

SPECIFICATIONS

- Aluminum body
- High Power Led
- High efficiency optics



It has a socket structure with driver mounted on the track on the luminaire.



Usage	Code	Beam Angle	Power	Luminous Flux	Colour Temperature	Weight	Colour
Surface or Recessed	SKR Oki	12°	27W	2.290lm	3.000 - 4.000 - 5.000K	900gr	White, Black, Gray
Surface or Recessed	SKR Oki	38°	27W	2.590lm	3.000 - 4.000 - 5.000K	900gr	White, Black, Gray
Surface or Recessed	SKR Oki	50°	27W	2.610lm	3.000 - 4.000 - 5.000K	900gr	White, Black, Gray
Surface or Recessed	SKR Oki	67°	27W	2.720lm	3.000 - 4.000 - 5.000K	900gr	White, Black, Gray
Track	1m - 2m - 3m						

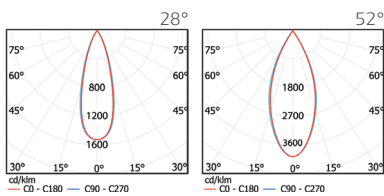
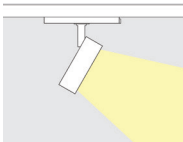


## IP20

Mini model, which is a small member of Sakura luminaires, has a similar structure with Oki. It is designed to be smaller in size. Due to the combination of the luminaire reflector and the lens used on the luminaire, extremely low glare values are achieved.

### SPECIFICATIONS

Aluminum body  
High Power Led  
High efficiency optics



It has a socket structure with driver mounted on the track on the luminaire.



Usage	Code	Beam Angle	Power	Luminous Flux	Colour Temperature	Weight	Colour
Surface or Recessed	SKR Mini	28°	11W	960lm	3.000 - 4.000 - 5.000K	800gr	White, Black, Gray
Surface or Recessed	SKR Mini	52°	11W	955lm	3.000 - 4.000 - 5.000K	800gr	White, Black, Gray
Track	1m - 2m - 3m						

L I T P A

**LİTPA LIGHTING**

Haraççı - Hadımköy Yolu Cad.  
No: 15 Haraççı Mah.  
Arnavutköy - İstanbul / TURKEY

Tel: +90 212 683 09 87  
Fax: +90 212 683 09 92

[www.litpa.com](http://www.litpa.com)