



Downlight Systems

DR (Frames)

IP20

The LITPA Downlight systems ensure that different models and luminaire fittings can be used with different power options. Each type of pulley, the LED light source with 3 different wattage can be easily installed with the integrated cooler.

There are options to use reflectors and lenses in luminaires. Thanks to the usage of optics, the light omitting from the luminaire is only and only directing to the enlighting areas. By this way energy conservation can be applied.



DR1



DR2 Adjustable



DR3

IP54



DR4



DR5

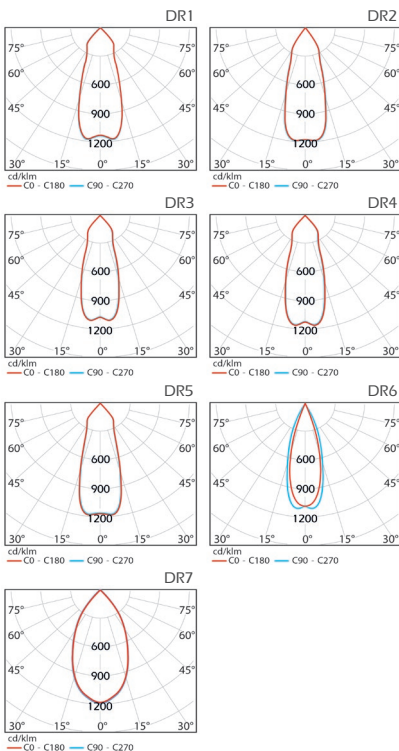


DR6

Adjustable



DR7



Darklight apparatus



Darklight apparatus narrows the angle of light coming out of the luminaire (available with DR1 - DR3 - DR4 - DR5 - DR7)

Code	DR1	DR2	DR3	DR4	DR5	DR6	DR7
LED	High efficiency COB LED						
System Power	4W 10W 15W	4W 10W 15W	4W 10W 15W	4W 10W 15W	4W 10W 15W	4W 10W 15W	4W 10W 15W
Light Flux	400lm 780lm 1170lm	350lm 650lm 980lm	360lm 690lm 1050lm	400lm 800lm 1200lm	380lm 750lm 1130lm	300lm 580lm 900lm	410lm 800lm 1200lm
Colour Temperature	3000 - 4000 - 5000 K						
Voltage	220V - 50Hz						
Body	Aluminum injection frame						
Optic	%99 pure aluminum or high efficiency lens						
Cooler	Aluminum injection						
Colour	White						



Downlight Systems

DOT (Power Options)

IP20



DOT1



DOT2



DOT3

Optic

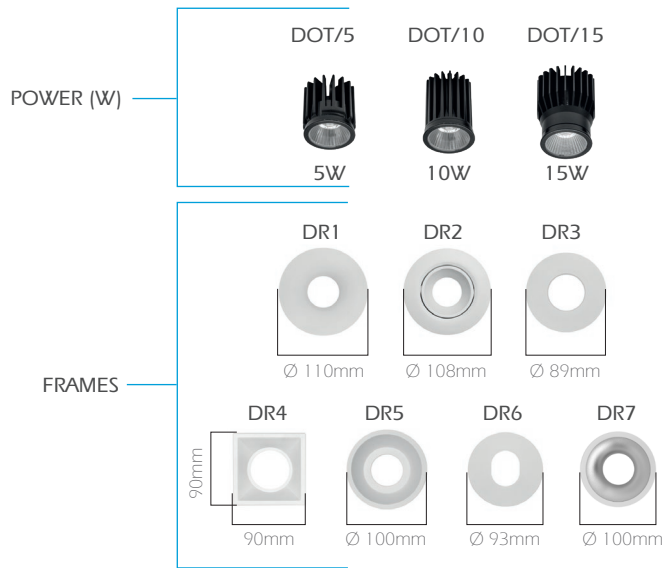


Lens



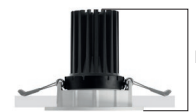
Reflector

This lighting system alone needs different visual, optical and light can be afforded. Some pulley types can be directed in vertical luminaire that permits. Anti-glare accessories can be applied to all pulley types.



LUMINAIRE HEIGHT (h)

Frame	POWER		
	DOT/5	DOT/10	DOT/15
	DR1	74mm	84mm
DR2	87mm	97mm	105mm
DR3	65mm	75mm	83mm
DR4	82mm	92mm	100mm
DR5	94mm	104mm	112mm
DR6	87mm	97mm	105mm
DR7	90mm	100mm	105mm



CUT-OUT

Frame	Cut-Out
DR1	88mm
DR2	90mm
DR3	70mm
DR4	80x80mm
DR5	90mm
DR6	75mm
DR7	90mm