

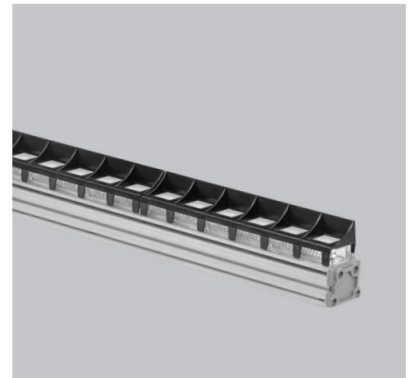
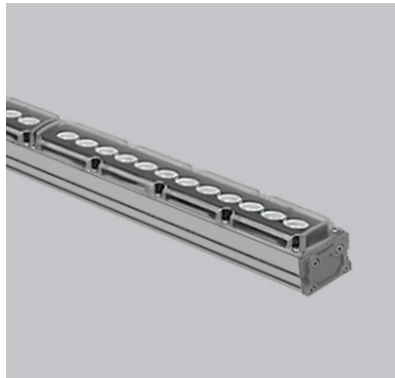
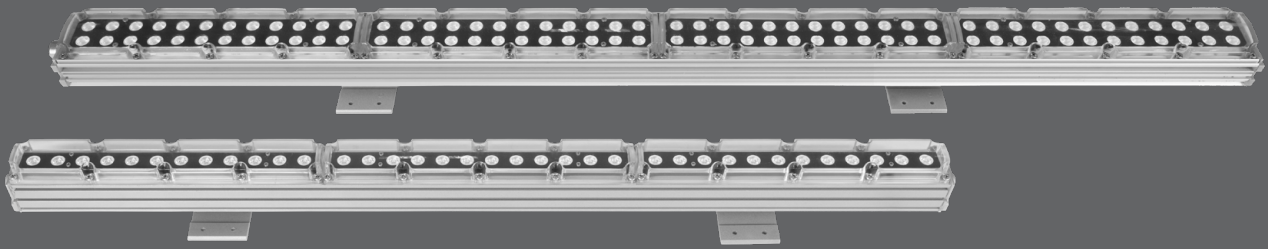


LITPA QUANTUM

Wallwasher

Quantum Wallwashers are a series of decorative, functional, and durable fixtures that have proven successful over the years. Their diverse optical options make achieving the desired effects in architectural lighting effortless. The Quantum series offers multiple light control features which, when combined, deliver outstanding results in practical applications. Featuring the longest-lasting, highest-performance power supplies designed specifically for outdoor environments, the series incorporates advanced LEDs to ensure reliability and efficiency. LITPA is fully prepared to address any practical challenges with a comprehensive range of accessories tailored for the Quantum luminaire series.





Quantum luminaires are available in three distinct types—Quantum Large, Quantum Slim, and Quantum Evo—each tailored to meet the specific needs of different applications. Quantum Large, with its high-power performance and versatile optical options, effectively illuminates tall facades, functioning similarly to a projector. This model also supports RGB and RGBW configurations for dynamic wallwashing effects. Quantum Slim features a sleek, compact design ideal for direct mounting on facade surfaces. Its versatile optical capabilities provide an elegant and highly effective lighting solution. Quantum Evo is designed as a wall washer for various decorative applications, incorporating advanced optical structures and integrated light blockers. Notably, Quantum Evo offers built-in glare control, eliminating the need for additional accessories in your lighting setup.

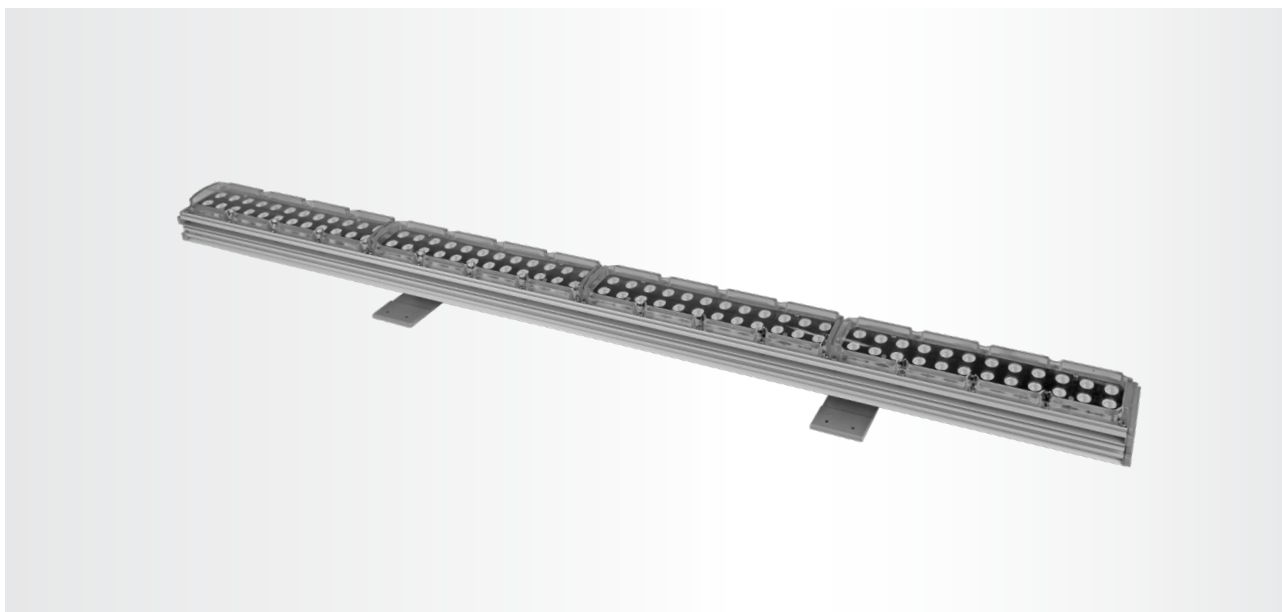
The Quantum series wallwashers have proven their reliability and performance across a wide range of environmental conditions over many years. Whether installed in snowy northern regions or in areas subject to extreme heat, these luminaires operate seamlessly without compromising performance. Built with LITPA's commitment to quality and precision, every aspect of the Quantum series—from their robust body structures to the smallest fixture components—reflects meticulous attention to detail.



Std.
MATT
ELOXAL
COATING

RAL
COLORS

- Opt.
- 9005
 - 9006
 - 9007
 - 7016
 - 9016



QTM LARGE



Code	Beam Angle	Luminous Flux	System Power	Weight
QTM/L120 NB	12°	13.230 lm	100W	4.25 kg
QTM/L120 WB	60°	13.570 lm	100W	4.25 kg
QTM/L120 ELP	Ellipsoidal	12.240 lm	100W	4.25 kg
QTM/L90 NB	12°	9.970 lm	75W	3.2 kg
QTM/L90 WB	60°	10.210 lm	75W	3.2 kg
QTM/L90 ELP	Ellipsoidal	9.030 lm	75W	3.2 kg
QTM/L60 NB	12°	6.920 lm	52W	2.6 kg
QTM/L60 WB	60°	7.040 lm	52W	2.6 kg
QTM/L60 ELP	Ellipsoidal	6.250 lm	52W	2.6 kg
QTM/L30 NB	12°	3.300 lm	26W	1.5 kg
QTM/L30 WB	60°	3.400 lm	26W	1.5 kg
QTM/L30 ELP	Ellipsoidal	3.030 lm	26W	1.5 kg

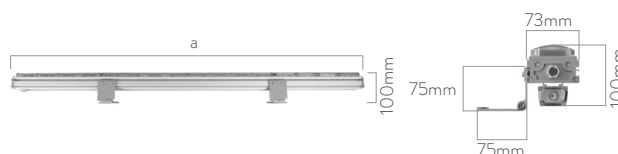
RGB

Code	Beam Angle	Luminous Flux	System Power	Weight
QTM/L120 RGB	12°-60°-Ellipsoidal	-	80W	4.3 kg
QTM/L90 RGB	12°-60°-Ellipsoidal	-	60W	3.3 kg
QTM/L60 RGB	12°-60°-Ellipsoidal	-	40W	2.7 kg
QTM/L30 RGB	12°-60°-Ellipsoidal	-	20W	1.6 kg

Body: Aluminum Extruded
Driver: Included

Lens: PMMA
Voltage: 220~240VAC

Color Temperature: 3000-4000-5000K-R-G-B-Amber-TW
Led: High-Power / Multi-Color Led



Code	a
QTM/L30	320 mm
QTM/L60	620 mm
QTM/L90	920 mm
QTM/L120	1.220 mm

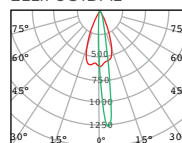


BOX DIMENSIONS
QTM/L30 45x18x12cm
QTM/L60 68x18x12cm
QTM/L90 110x18x12cm
QTM/L120 132x18x12cm

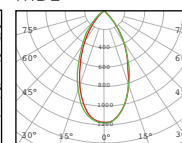


BOX WEIGHT
QTM/L30 1.7 kg
QTM/L60 2.3 kg
QTM/L90 3.0 kg
QTM/L120 3.5 kg

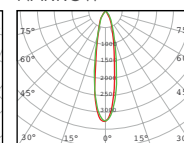
ELLIPSOIDAL



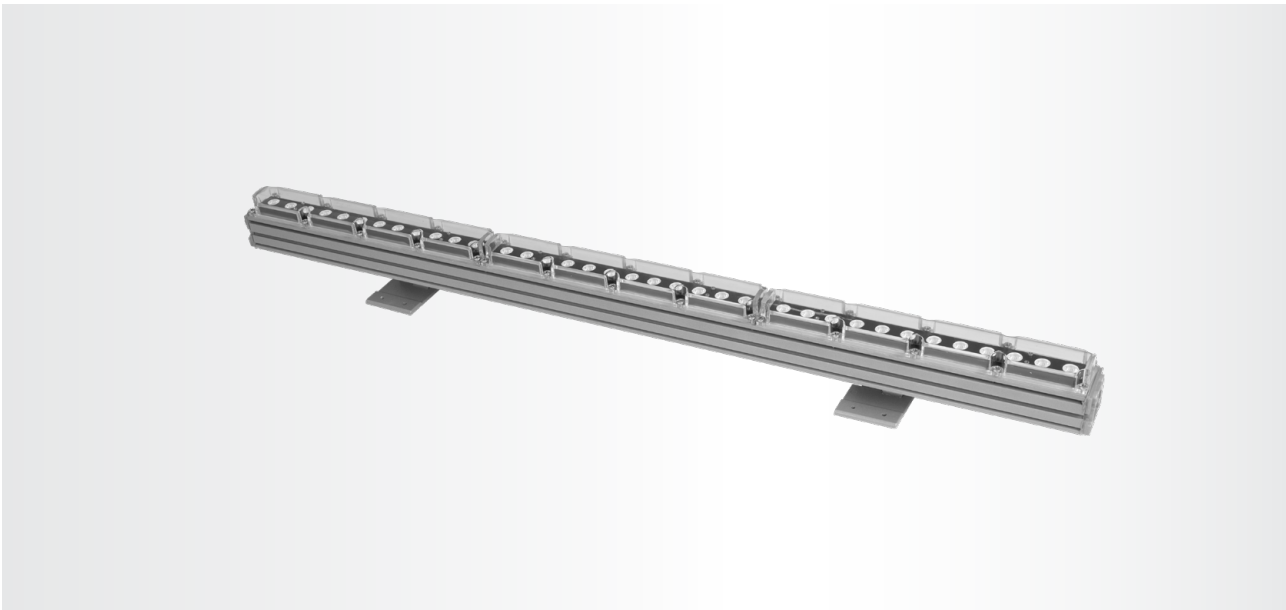
WIDE



NARROW

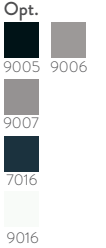


cd/klm
- C0 - C180 - C90 - C270
- C0 - C180 - C90 - C270
- C0 - C180 - C90 - C270



Std.
MATT
ELOXAL
COATING

RAL
COLORS



QTM SLIM



Code	Beam Angle	Luminous Flux	System Power	Weight
QTM/S120 NB	12°	7.000 lm	51W	3 kg
QTM/S120 WB	60°	7.180 lm	51W	3 kg
QTM/S120 ELP	Ellipsoidal	6.450 lm	51W	3 kg
QTM/S90 NB	12°	5.250 lm	40W	2.4 kg
QTM/S90 WB	60°	5.410 lm	40W	2.4 kg
QTM/S90 ELP	Ellipsoidal	4.820 lm	40W	2.4 kg
QTM/S60 NB	12°	3.530 lm	28W	1.8 kg
QTM/S60 WB	60°	3.610 lm	28W	1.8 kg
QTM/S60 ELP	Ellipsoidal	3.230 lm	28W	1.8 kg
QTM/S30 NB	12°	1.770 lm	14W	1.2 kg
QTM/S30 WB	60°	1.810 lm	14W	1.2 kg
QTM/S30 ELP	Ellipsoidal	1.625 lm	14W	1.2 kg

Body: Aluminum Extruded
Driver: Included

Lens: PMMA
Voltage: 220~240VAC

Color Temperature: 3000-4000-5000K-R-G-B-Amber
Led: High-Power Led



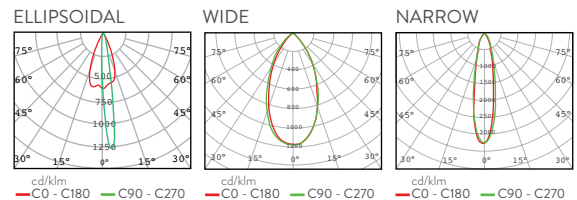
Code	a
QTM/S30	320 mm
QTM/S60	620 mm
QTM/S90	920 mm
QTM/S120	1.220 mm



BOX DIMENSIONS
QTM/S30 45x18x12cm
QTM/S60 68x18x12cm
QTM/S90 110x18x12cm
QTM/S120 132x18x12cm



BOX WEIGHT
QTM/S30 1.7 kg
QTM/S60 2.3 kg
QTM/S90 3.0 kg
QTM/S120 3.5 kg



Std.
MATT
ELOXAL
COATING

RAL
COLORS

- Opt.
- 9005
 - 9006
 - 9007
 - 7016
 - 9016



QTM EVO

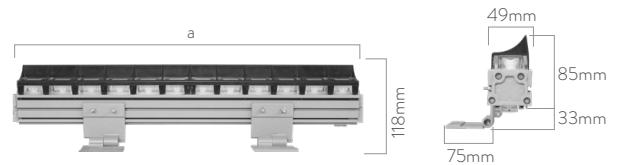


Code	Beam Angle	Luminous Flux	System Power	Weight
QTM/EVO100	Ellipsoidal Asymmetrical	5.400 lm	54W	3.5 kg
QTM/EVO 50	Ellipsoidal Asymmetrical	2.700 lm	27W	1.8 kg

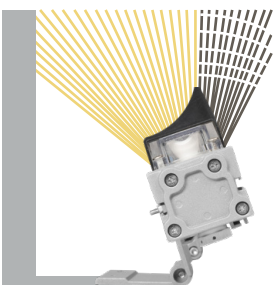
Body: Aluminum Extruded
Driver: Included

Lens: PMMA
Voltage: 220~240VAC

Color Temperature: 3000-4000-5000K-R-G-B-Amber
Led: High-Power Led



Code	a
QTM EVO 100	500 mm
QTM EVO 50	260 mm

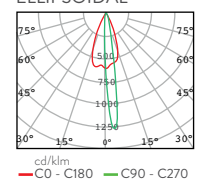


BOX DIMENSIONS
EVO100 55x18x12cm
EVO50 30x18x12cm



BOX WEIGHT
EVO100 4 kg
EVO50 2.3 kg

ELLIPSOIDAL



SPECIFICATIONS

LITPA QUANTUM

GENERAL

Color Temperature :	3000K-4000K-5000K RGB- RGBW-R-G-B- Amber- Tunable White
Transformer :	Driver
Number of Drivers :	1 Piece
Interface Control :	Optional DMX
Connection :	IP 67 Connector
Protection Class IEC :	I Class
Light Source Type :	LED
Other Certificate:	TSE - IEC
CE Mark:	CE
Eu RoHS compliance :	Yes

APPLICATION CONDITIONS

Ambient Temperature Range :	-40 to +55 °C
Performance Ambient Temperature	Tq 25 °C
Maximum Dimming Level :	10% (Optional)

QTM-S

Input Voltage :	220~240VAC
Input Frequency :	50 to 60 Hz
Inrush Current :	Cold start 8A-15A-41A
Power Factor (min.) :	PF >0.95
Leakage Current :	0.5 mA
Current Ripple :	< %5
Efficiency :	> %88
Control and Dimming :	Optional

QTM-EVO

Input Voltage :	220~240VAC
Input Frequency :	50 to 60 Hz
Inrush Current :	Cold start 60A
Power Factor (min.) :	PF >0.97
Leakage Current :	0.5 mA
Current Ripple :	< %5
Efficiency :	> %88
Control and Dimming :	Optional

APPROVAL AND APPLICATION

Protection Class:	IP66
Mechanical strength code :	IK09
Surge arrester (common/differential) :	6kV / 4kV

MATERIAL INFORMATION

Body Material :	Al6063
Mounting Material :	AL141
Optical Material :	Acrylic Lens
Optical Cover/Lens Material :	PMMA Cover
Material Colour :	Gray

TIME DEPENDENT PERFORMANCE (IIEC COMPLIANT)

Lumen maintenance in average lifetime :	50.000hr
--	----------

QTM-L

Input Voltage :	220~240VAC
Input Frequency :	50 to 60 Hz
Inrush Current :	Cold start 16A-41A-70A
Power Factor (min.) :	PF >0.98
Leakage Current :	0.5 mA
Current Ripple :	< %5
Efficiency :	> %92
Control and Dimming :	Optional

QTM-L-RGB

Input Voltage :	220~240VAC
Input Frequency :	50 to 60 Hz
Inrush Current :	Cold start 18A-28A-40A
Power Factor (min.) :	PF >0.97
Leakage Current :	0.3 mA
Current Ripple :	< %1.5
Efficiency :	> %90
Control and Dimming :	Optional